



**ACRIS STREET  
WANDSWORTH  
LONDON  
SW18 2QR**

Wandsworth SW18

A very spacious town house located close to Wandsworth Common. Wandsworth mainline station and Clapham Junction are nearby as well as numerous bus services. The property is very well laid out and offers 4 bedrooms, 3 bathrooms, separate cloakroom, double reception room, large kitchen/dining room, excellent storage and a lovely private garden. Available from September 3rd for a long let - Unfurnished - Rent £795 per week.

**LOVELY GARDEN \* GREAT SPACE**

**PRICE: £795 per week**

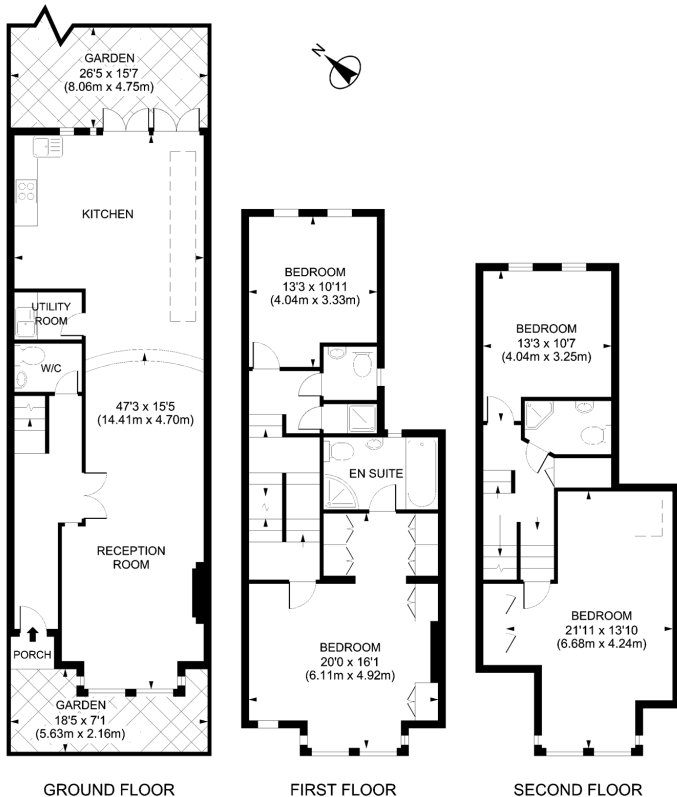


Established in 1975

Malvern Court, Onslow Square, SW7 3HU

[alexander@malverns.co.uk](mailto:alexander@malverns.co.uk)

020 7589 8122



Acris Street, SW18  
 Gross Internal Area 1851 sq ft 172 sq metres

Viewing: Strictly by appointment with Malverns. Important notice Malverns and their clients give notice that: 1: They are not authorised to make or give any representations or warranties in relation to the property either here or elsewhere, either on their own behalf or on behalf of their client or otherwise. They assume no responsibility for any statement that may be made in these particulars. These particulars do not form part of any offer or contract and must not be relied upon as statements or representations of fact. 2: Any areas, measurements or distances are approximate. The text, photographs and plans are for guidance only and are not necessarily comprehensive. It should not be assumed that the property has all necessary planning, building regulation or other consents and Malverns have not tested any services, equipment or facilities. Purchasers must satisfy themselves by inspection or otherwise. 09/08/2017